

YHP-L / YHP-L-ECM High Static Pressure Blower

YHP-L / YHP-L-ECM 130-740 · 2 & 4 pipe system
A complete range from 2.1 kW to 12.3 kW



ECM Inverter version also available!



Wired controls



WM-3V
Remote three speeds controller

JWC-T
WC-3V + Electronic thermostat and Summer/Winter switch

JWC-AU
Automatic JWC-T



T-MB
Digital Automatic Remote controller

WM-503-AC-EC
Digital Automatic Remote controller to be mounted in the standard light wall box



TUC03+ Terminal unit controller
BacNET and N2 Metasys network compatible



YHP-L and YHP-L ECM offers a complete range able to satisfy all air conditioning need in working environments such as offices, shops, restaurants and hotel rooms, for ducted installations up to 80 Pa External Static Pressure.

These new ranges replace our earlier YHP-L series, offering lower noise levels, a strengthened structure and wider operating envelope.

The YHP-L series comes in 7 sizes from 340 to 1810 m³/h with option of 3 or 4 row cooling coils, offering up to 10.5 kW of cooling, with facility to add 1 or 2 row heating coil and offer a 4 pipe system.

ECM version comes in 4 sizes and covers the airflow capacity of 330 to 2460 m³/h and up to 12.3 kW of cooling.

Features

- 7 sizes
- From 3000 to 10500 w cooling
- Horizontal or vertical version
- Low noise operation
- 5 speed fan
- A wide range of thermostats and accessories
- Available with left or right connections

Optionally the main valve, auxiliary valve (4 tubes), controller and wiring can be assembled from factory, for an easy installation in a centralized management system.



Selection software

YHP-L High Static Pressure Blower

2.1 kW to 10.5 kW



Technical features

Model		130	140	230	240	330	340	430	440	530	540	630	640	730	740	
Total cooling capacity [kW]	(1)	max	2.93	3.37	4.47	5.45	6.00	6.95	6.74	7.42	7.24	8.01	8.56	9.55	9.22	10.42
		med	2.81	3.21	4.29	5.18	5.54	6.34	6.00	6.53	6.11	6.65	7.97	8.80	7.90	8.88
		min	2.14	2.39	3.16	3.69	3.36	3.71	4.12	4.41	3.98	4.24	4.77	5.10	5.87	6.45
Sensible cooling capacity [kW]	(1)	max	2.24	2.50	3.49	3.99	4.72	5.14	5.43	5.77	5.53	6.02	6.67	7.18	7.09	7.74
		med	2.09	2.33	3.23	3.69	4.19	4.54	4.58	4.85	4.42	4.76	5.99	6.42	6.08	6.60
		min	1.57	1.71	2.33	2.59	2.44	2.59	3.04	3.18	2.82	2.98	3.44	3.60	4.30	4.61
Water flow in cooling [l/h]	(1)	max	504	579	768	938	1033	1195	1160	1276	1246	1378	1473	1642	1586	1793
		med	484	551	738	890	952	1091	1033	1123	1050	1144	1370	1514	1359	1527
		min	369	410	543	635	578	638	709	758	684	730	821	878	1010	1109
Pressure drop in cooling [kPa]	(1)	max	38.5	23.0	28.8	48.3	27.1	57.4	33.7	23.2	50.6	28.5	26.1	22.4	28.8	25.4
		med	34.6	20.5	25.7	42.4	22.6	47.1	26.1	17.7	35.7	19.7	22.1	18.7	22.9	19.9
		min	21.7	12.3	15.3	23.8	9.4	18.4	13.8	9.0	17.0	9.0	9.0	7.2	13.4	11.2
Heating capacity 2 pipes [kW]	(2)	max	3.31	3.60	5.18	5.76	6.99	7.32	8.11	8.57	8.38	8.84	9.50	10.62	10.29	11.58
		med	3.08	3.33	4.78	5.29	6.16	6.43	6.80	7.12	6.59	6.90	8.49	9.42	8.80	9.80
		min	2.25	2.39	3.37	3.63	3.48	3.57	4.43	4.57	4.08	4.21	4.77	5.10	6.18	6.70
Water flow in heating 2 pipes [l/h] *	(2)	max	285	310	445	495	601	629	698	737	721	761	817	914	885	996
		med	265	286	411	455	530	553	585	613	567	593	730	810	757	843
		min	194	206	290	312	299	307	381	393	351	362	410	439	531	576
Pressure drop in heating 2 pipes [kPa]	(2)	max	40.3	24.8	29.4	43.6	28.0	49.7	36.6	23.5	51.4	28.8	24.7	23.1	28.6	27.0
		med	35.4	21.5	25.4	37.4	22.3	39.4	26.7	16.8	33.4	18.4	20.2	18.6	21.6	20.0
		min	20.2	11.9	13.6	19.0	8.0	13.7	12.3	7.6	14.1	7.6	7.2	6.2	11.4	10.1
Heating capacity 4 pipes [kW]	(3)	max	2.50	2.50	3.70	3.70	4.87	4.87	5.48	5.48	5.79	5.79	6.93	6.93	7.40	7.40
		med	2.36	2.36	3.48	3.48	4.44	4.44	4.78	4.78	4.81	4.81	6.35	6.35	6.53	6.53
		min	1.85	1.85	2.65	2.65	2.88	2.88	3.45	3.45	3.34	3.34	4.05	4.05	4.94	4.94
Water flow in heating 4 pipes [l/h] *	(3)	max	215	215	318	318	419	419	471	471	498	498	596	596	637	637
		med	203	203	299	299	382	382	411	411	413	413	547	547	562	562
		min	159	159	228	228	248	248	297	297	287	287	348	348	425	425
Pressure drop in heating 4 pipes [kPa]	(3)	max	14.1	14.1	6.9	6.9	11.2	11.2	13.8	13.8	13.7	13.7	21.1	21.1	23.8	23.8
		med	12.8	12.8	6.2	6.2	9.4	9.4	10.8	10.8	9.8	9.8	18.1	18.1	19.0	19.0
		min	8.3	8.3	3.8	3.8	4.3	4.3	6.0	6.0	5.1	5.1	8.0	8.0	11.5	11.5
Air flow [m ³ /h]		max	535	535	860	860	1115	1115	1340	1340	1375	1375	1635	1635	1810	1810
		med	490	490	780	785	960	960	1080	1080	1030	1030	1425	1425	1490	1490
		min	340	340	515	515	500	500	655	655	595	595	720	720	970	970
Sound power level [dB(A)]		max	51	51	55	55	57	57	63	63	62	62	61	61	63	63
		med	48	48	52	52	54	54	58	58	56	56	58	58	59	59
		min	40	40	42	42	38	38	45	45	43	43	42	42	48	48
Sound pressure level [dB(A)]	(4)	max	42	42	46	46	48	48	54	54	53	53	52	52	53	53
		med	39	39	43	43	44	44	49	49	47	47	48	48	49	49
		min	31	31	33	33	29	29	36	36	34	34	33	33	39	39
Power supply [V-ph-Hz]		230 / 1 / 50 + E														
Power input [W]	max	60.00	60.00	115.00	115.00	132.00	132.00	185.00	185.00	185.00	185.00	175.00	175.00	260.00	260.00	
Absorbed current [A]	max	0.30	0.30	0.50	0.50	0.60	0.60	0.90	0.90	0.90	0.90	0.80	0.80	1.20	1.20	
Dimensions	Height	mm	511	511	511	511	511	511	511	511	511	511	511	511	511	
	Width	mm	689	689	904	904	1119	1119	1119	1119	1334	1134	1549	1549	1549	
	Depth	mm	248	248	248	248	248	248	248	248	248	248	248	248	248	

Referred data at maximum speed fan and 0 Pa available static pressure.

(1) Room temperature 27°C d.b., 19°C w.b. - Water temperature 7/12 °C.

(2) Room temperature 20°C - Water temperature 45/40 °C.

(3) Room temperature 20°C - Water temperature 65/55 °C.

(4) The sound pressure levels are 9 dB(A) lower than the sound power levels and apply to the reverberant field of a 100 m³ room and a reverberation time of 0.5 sec.

* Water flow values as Cooling, accordingly to the EUROVENT standards and UNI ENV 1397.



Manufacturer reserves the rights to change specifications without prior notice.

YHP-L-ECM Inverter High Static Pressure Blower

2.1 kW to 12.3 kW



ECM the Energy Saving Technology

Brushless motor with inverter managed by dedicated controls. It permits to maintain extremely low electrical absorption and a continuous modulation of the air flow.

Technical features

Model		130	140	230	240	430	440	730	740
Total cooling capacity [kW]	(1) max 10V	3.34	3.85	5.44	6.87	6.82	7.52	10.91	12.32
	med 5V	3.04	3.48	4.46	5.48	5.75	6.27	8.43	9.36
	min 1V	2.11	2.33	3.27	3.87	3.95	4.21	5.58	6.03
Sensible cooling capacity [kW]	(1) max 10V	2.62	2.93	4.48	5.25	5.54	5.90	9.00	9.83
	med 5V	2.34	2.60	3.51	4.04	4.51	4.77	6.57	7.10
	min 1V	1.54	1.67	2.44	2.75	2.92	3.05	4.09	4.34
Water flow in cooling [l/h]	(1) max 10V	574	663	936	1181	1174	1294	1877	2118
	med 5V	523	598	766	942	990	1078	1449	1609
	min 1V	363	400	563	665	679	724	960	1038
Pressure drop in cooling [kPa]	(1) max 10V	48.4	29.2	41.1	73.1	34.1	23.5	40.8	35.7
	med 5V	40.7	24.1	28.1	47.8	24.6	16.7	25.0	21.3
	min 1V	20.8	11.6	15.9	25.4	12.4	8.1	11.8	9.6
Heating capacity 2 pipes [kW]	(2) max 10V	3.88	4.27	6.87	7.82	8.35	8.83	12.69	14.91
	med 5V	3.44	3.75	5.27	5.88	6.66	6.99	9.14	10.45
	min 1V	2.19	2.33	3.56	3.86	4.19	4.32	5.57	6.14
Water flow in heating 2 pipes [l/h] *	(2) max 10V	334	367	591	673	718	759	1092	1283
	med 5V	296	322	453	505	573	601	786	899
	min 1V	189	200	307	332	360	371	479	528
Pressure drop in heating 2 pipes [kPa]	(2) max 10V	53.7	33.7	48.9	75.6	38.5	24.8	41.7	42.6
	med 5V	43.1	26.7	30.3	45.2	25.7	16.3	23.1	22.5
	min 1V	19.2	11.3	15.0	21.2	11.1	6.8	9.5	8.6
Heating capacity 4 pipes [kW]	(3) max 10V	2.82	2.82	4.64	4.64	5.35	5.35	8.97	8.97
	med 5V	2.57	2.57	3.75	3.75	4.49	4.49	6.85	6.85
	min 1V	1.82	1.82	2.78	2.78	3.16	3.16	4.64	4.64
Water flow in heating 4 pipes [l/h] *	(3) max 10V	243	243	399	399	460	460	772	772
	med 5V	221	221	322	322	386	386	589	589
	min 1V	156	156	239	239	272	272	399	399
Pressure drop in heating 4 pipes [kPa]	(3) max 10V	17.6	17.6	10.4	10.4	13.2	13.2	33.6	33.6
	med 5V	14.9	14.9	7.1	7.1	9.6	9.6	20.7	20.7
	min 1V	8.0	8.0	4.1	4.1	5.1	5.1	10.2	10.2
Air flow [m ³ /h]	max 10V	650	650	1235	1235	1390	1390	2460	2460
	med 5V	560	560	880	880	1055	1055	1605	1605
	min 1V	330	330	550	550	615	615	880	880
Sound power level [dB(A)]	max 10V	58	58	64	64	64	64	70	70
	med 5V	54	54	55	55	57	57	61	61
	min 1V	41	41	44	44	44	44	48	48
Sound pressure level [dB(A)]	(4) max 10V	49	49	55	55	55	55	61	61
	med 5V	45	45	46	46	48	48	52	52
	min 1V	32	32	35	35	35	35	39	39
Power supply [V-ph-Hz]		230 / 1 / 50 + E							
Power input [W]	max	52	52	134	134	131	131	303	303
Absorbed current [A]	max	0.4	0.4	1.1	1.1	1.1	1.1	1.4	1.4
Dimensions	Height mm	511	511	511	511	511	511	511	511
	Width mm	689	689	904	904	1119	1119	1549	1549
	Depth mm	248	248	248	248	248	248	248	248

Referred data at maximum speed fan and 0 Pa available static pressure.

(1) Room temperature 27°C d.b., 19°C w.b. - Water temperature 7/12 °C.

(2) Room temperature 20°C - Water temperature 45/40 °C.

(3) Room temperature 20°C - Water temperature 65/55 °C.

(4) The sound pressure levels are 9 dB(A) lower than the sound power levels and apply to the reverberant field of a 100 m³ room and a reverberation time of 0.5 sec.

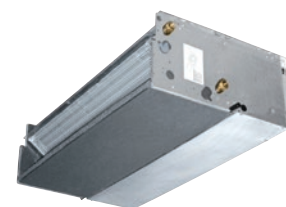
* Water flow values as Cooling, accordingly to the EUROVENT standards and UNI ENV 1397.



Manufacturer reserves the rights to change specifications without prior notice.

YHP-L and YHP-L-ECM High Static Pressure Blower

Compatibility tables



Compatibility table / Codes

Model YHP-L	130-140	230-240	330-340	430-440	530-540	630-640	730-740
Model YHP-L-ECM	130-140	230-240	-	430-440	-	-	730-740

Accessories (factory fitted)

Valves (220V On/Off)

3 way valve for main coil VBPM-C G1-5 220V (factory fitted)	9066561				-		
3 way valve for main coil VBPM-C G6-9 220V (factory fitted)	-			9060471			-
3 way valve for main coil VBPM-C G8S 220V (factory fitted)				-			9069208
3 way valve for additional coil VBAM-C G1-9 220V (factory fitted)					9060472		
2 way valve for additional coil V2M-C G1-5 220V (factory fitted)	9060476				-		
2 way valve V2M-C G6-9 220V (factory fitted)	-			9060477			-
2 way valve V2M-C G8S 220V (factory fitted)				-			9069209
Simplified 3-way valve kit for additional coil VSPM-C G1-5 220 V (fitted)	9066571				-		
Simplified 3-way valve kit VSPM-C G6-9 220 V (factory fitted)	-			9060484			-
Simplified 3-way valve kit VSPM-C G8-S 220 V (factory fitted)				-			9069211

Accessories (supplied loose)

Valves (220V On/Off)

3 way valve for main coil VBPS-C G1-5 220V (not fitted)	9066560				-		
3 way valve for main coil VBPS-C G6-9 220V (not fitted)	-			9060474			-
3 way valve for main coil VBPS-C G8S 220V (not fitted)				-			9069206
3 way valve for additional coil VBAS-C G1-9 220V (not fitted)					9060475		
2 way valve for additional coil V2S-C G1-5 220V (not fitted)	9060478				-		
2 way valve V2S-C G6-9 220V (not fitted)	-			9060479			-
2 way valve V2S-C G8S 220V (not fitted)				-			9069207
Simplified 3-way valve kit for additional coil VSPS-C G1-5 220 V (not fitted)	9066570				-		
Simplified 3-way valve kit VSPS-C G6-9 220 V (not fitted)	-			9060481			-
Simplified 3-way valve kit VSPS-C G8-S 220 V (not fitted)				-			9069210
Other type of valves							Contact Johnson Controls

YHP-L and YHP-L-ECM High Static Pressure Blower

Compatibility tables



Compatibility table / Codes

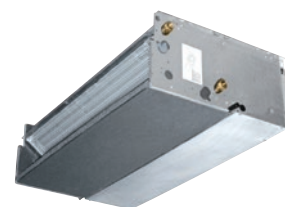
Model YHP-L	130-140	230-240	330-340	430-440	530-540	630-640	730-740
Model YHP-L-ECM	130-140	230-240	-	430-440	-	-	730-740

Accessories (supplied loose)

Air inlet plenum PMC	9069191	9069222	9066368	9069195	9069196		
Straight inlet flange	9069371	9038002	9060724	9069375	9079376		
Inlet flange 90°	9069381	9038001	9060714	9069385	9069386		
Intake grid 90°	9060761	9060762	9060763	9068155	9038041		
Straight outlet flange	9069391	9069232	9066378	9069395	9069396		
Outlet flange 90°	9069400	9069242	9066388	9069405	9069406		
Outlet grid	9060751	9060752	9060753	9069415	9038040		
El. resistance and relays fitted on the unit (1500 W) BEL-I G3-4/15	9066613			-			
El. resistance and relays fitted on the unit (900 W) BEL-I G3-4/09	9066603			-			
El. resistance and relays fitted on the unit (600 W) BEL-I G3-4/06	9066593			-			
El. resistance and relays fitted on the unit (2000 W) BEL-I G5-6/20	-	9066615		-			
El. resistance and relays fitted on the unit (1250 W) BEL-I G5-6/12	-	9066605		-			
El. resistance and relays fitted on the unit (750 W) BEL-I G5-6/07	-	9066595		-			
El. resistance and relays fitted on the unit (2500 W) BEL-I G7-9/25		-	9066617		-		
El. resistance and relays fitted on the unit (1500 W) BEL-I G7-9/15		-	9066607		-		
El. resistance and relays fitted on the unit (1000 W) BEL-I G7-9/10		-	9066597		-		
El. resistance and relays fitted on the unit (2750 W) BEL-I SL5/27			-	9038037		-	
El. resistance and relays fitted on the unit (1650 W) BEL-I SL5/16			-	9038038		-	
El. resistance and relays fitted on the unit (1100 W) BEL-I SL5/11			-	9038039		-	
El. resistance and relays fitted on the unit (3500 W) BEL-I SL6-7/35			-			9038047	
El. resistance and relays fitted on the unit (2500 W) BEL-I SL6-7/25			-			9038048	
El. resistance and relays fitted on the unit (1000 W) BEL-I SL6-7/10			-			9038049	
NC auxiliary condensate tray ACT-NC				6066039			
Mounted condensate pump DRCV - vertical units (auxiliary condensate tray included)				9066297			
Not mounted condensate pump DRCV - vertical units (auxiliary condensate tray included)				9066296			
Not mounted condensate pump DRPI-C - only horizontal installation (auxiliary condensate tray included)				9066180			
Condensate drain pipe SCR				6060420			
Front air intake KAF	9069361	9069072	9069073	9069365	9069366		

YHP-L and YHP-L-ECM High Static Pressure Blower

Compatibility tables



Compatibility table / Codes

Controls for YHP-L models	130-140	230-240	330-340	430-440	530-540	630-640	730-740
Remote three speed control WM-3V (1) (4)				9066642			
Remote three speed control + electronic thermostat and manual S/W switch JWC-T (2)				9066630K			
Remote three speed control + electronic thermostat and centralized/manual S/W switch JWC-TQR (2) (3)				9066631K			
Automatic speed control with electronic thermostat and S/W switch - JWC-AU (to be used with UPM-AU and UP-AU only) (2) (3)				9066632K			
Automatic remote control with electronic thermostat, S/W switch and liquid crystall display T-MB (2) (3)				9066331E			
Automatic speed control with electronic thermostat to be mounted in the light wall box WM-503-AC-EC (to be used with UP-503-AC-EC only)				9066686			
Electromechanical thermostat T2T (4) (5)				9060174			
Power unit UPM-AU for JWC-AU and T-MB remote controls, fitted on the unit				9066641			
Power unit UP-AU for JWC-AU and T-MB remote controls, not fitted on the unit				9066640			
Power unit UP-503-AC-EC for WM-503-AC-EC remote control only, not fitted on the unit				9066687			
Control accessories for all versions (supplied with separate packaging)							
Low temperature cut-out for controls WM-3V and JWC-T				9053048			
Low temperature cut-out for controls JWC-TQR, WM-503-AC-EC and UP-AU power unit				3021090			
T2 sensor to be used as Change-over for UP-AU power unit				9025310			
Change-over 15-25 for control JWC-TQR				9053049			
Receiver board for control JWC-T and JWC-TQR				9066311			
Controls for YHP-L-ECM models	130-140	230-240	-	430-440	-	-	730-740
Automatic speed control with electronic thermostat and S/W switch - JWC-AU (to be used with UPM-AU and UP-AU only) (2) (3)				9066632K			
Automatic remote control with electronic thermostat, S/W switch and liquid crystall display T-MB (to be used with UPM-AU and UP-AU only) (2) (3)				9066331E			
WM-S-ECM Continuous fan speed control with electronic thermostat, summer/winter switch and LCD display				9066644			
Power unit UPM-AU for JWC-AU and T-MB remote controls, fitted on the unit				9066641			
Power unit UP-AU for JWC-AU and T-MB remote controls, not fitted on the unit				9066640			

(1) Not to be used with valves. (2) Can be used with valves and/or low temperature cut-out.

(3) Can be used with Change Over. (4) Not suitable with -E electric heater. (5) Can be used with valve and not to be used with low temperature cut-out.

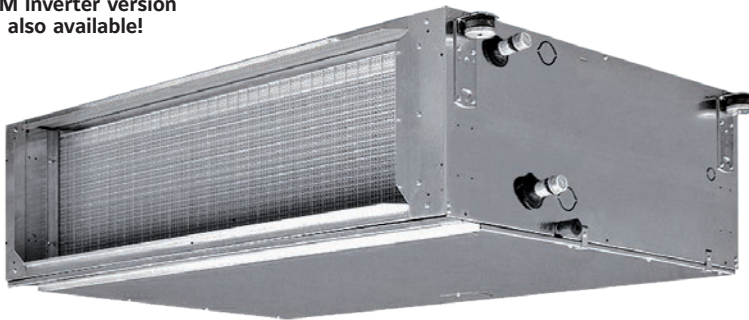
RFHP-O / RFHPO-ECM High static pressure blower with centrifugal fan

RFHP-O / RFHPO-ECM 14 - 74+2 · 2 & 4 pipe system

A complete range from 4.0 kW to 30.6 kW



ECM Inverter version also available!



Wired controls



WM-3V
Remote three speeds controller

JWC-T
WC-3V + Electronic thermostat and Summer/Winter switch

JWC-AU
Automatic JWC-T



T-MB
Digital Automatic Remote controller

WM-503-AC-EC
Digital Automatic Remote controller to be mounted in the standard light wall box



TUC03+ Terminal unit controller
BacNET and N2 Metasys network compatible



RFHP-O and RFHPO-ECM ranges are designed and built for concealed installations. With small dimensions, they are very silent and offers elevated air flow rates and up to 250 Pa External Static Pressure.

They are suitable for climate control for small and medium commercial and sports environments or for large civil environments and integrate perfectly in regular false ceilings.

The RFHP-O range is available with the combination of either 3 or 4 row coils (sizes 1÷5) with the possibility to add a 1 or 2 row coil (3+1, 4+1, 3+2, 4+2 versions for 4 pipe systems), and 4 or 6 row coils (sizes 6-7) with the possibility to add a 2 row coil (4+2, 6+2 versions for 4 pipe systems).

ECM version comes in 5 sizes and its ability to continuously vary the air flow gives great regulation and control flexibility, at the same time ensuring excellent environmental conditions and extremely low electrical consumption.

Features

- 7 sizes
- From 4040 to 30630 w cooling
- Concealed version
- Low noise operation
- 5 speed fan
- A wide range of thermostats and accessories
- Available with left or right connections

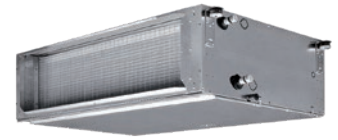
Optionally the main valve, auxiliary valve (4 tubes), controller and wiring can be assembled from factory, for an easy installation in a centralized management system.



Selection software

RFHP-O High static pressure blower

4.1 kW to 30.6 kW



Technical features

Model RFHP-O 2 pipes (4 row coil)		14	24	34	44	54 (*)	64 (*)	74 (*)	
Total cooling capacity [kW]	(1)	max 5v	5.92	8.15	10.71	13.60	17.76	22.89	30.63
		med 3v	5.21	7.01	9.76	12.40	16.19	18.73	25.33
		min 1v	4.17	4.99	8.71	10.90	14.54	12.42	21.54
Sensible cooling capacity [kW]	(1)	max	5.03	6.62	8.65	10.90	14.37	17.98	24.53
		med	4.26	5.48	7.68	9.70	12.80	14.16	19.46
		min	3.25	3.66	6.67	8.25	11.21	8.88	16.05
Pressure drop in cooling [kPa]	(1)	max	9.6	16.8	23.4	20.9	19.4	22.6	27.6
		med	7.6	12.7	19.8	17.7	16.3	15.3	19.3
		min	5.1	6.9	16.0	13.9	13.3	7.4	14.4
Heating capacity [kW]	(2)	max	7.67	1.10	13.19	16.53	22.93	43.60	61.14
		med	6.44	8.27	11.75	14.92	20.32	33.52	47.85
		min	4.98	5.57	10.20	12.79	17.67	20.86	39.34
Pressure drop in heating [kPa]	(2)	max	11.3	18.3	24.8	21.3	22.8	14.7	18.8
		med	8.2	17.0	23.0	17.7	18.3	9.1	12.1
		min	5.2	6.2	15.6	13.4	14.2	3.9	8.5
Air flow [m³/h]		max	1410	1825	2440	3020	3850	4800	7100
		med	1125	1410	2075	2580	3280	3385	5070
		min	790	840	1710	2070	2740	1880	3925
Fan [W]		max	191	285	470	570	760	1304	2460
		med	154	230	420	490	617	778	1758
		min	115	170	350	390	500	574	1518

Model RFHP-O 4 pipes (with additional coil)		14+1	24+1	34+1	44+1	54+1 (*)	64+2 (*)	74+2 (*)	
Total cooling capacity [kW]	(1)	max 5v	5.79	8.03	10.58	13.46	16.73	22.52	30.36
		med 3v	5.11	6.95	9.67	12.34	15.31	18.56	25.25
		min 1v	4.09	4.99	8.61	10.85	13.75	12.33	21.53
Sensible cooling capacity [kW]	(1)	max	4.87	6.49	8.51	10.72	13.56	17.62	24.28
		med	4.16	5.42	7.60	9.61	12.13	14.02	19.39
		min	3.18	3.66	6.58	8.21	10.62	8.81	16.05
Pressure drop in cooling [kPa]	(1)	max	9.20	16.30	22.90	20.50	17.40	22.00	27.10
		med	7.30	12.50	19.40	17.40	14.70	15.00	19.10
		min	4.90	6.90	15.70	13.80	12.00	7.30	14.40
Heating capacity [kW]	(3)	max	5.47	7.16	9.20	12.00	15.28	37.13	51.31
		med	4.87	6.28	8.47	11.07	14.00	29.78	41.88
		min	3.96	4.63	7.62	9.83	12.67	19.81	35.50
Pressure drop in heating [kPa]	(3)	max	21.0	31.9	22.3	39.5	36.3	37.0	46.1
		med	17.0	25.2	19.3	34.1	31.1	24.9	32.0
		min	11.7	14.5	15.9	27.6	26.0	11.9	23.8
Air flow [m³/h]		max	1350	1775	2390	2960	3800	4680	6980
		med	1090	1390	2045	2545	3245	3330	5040
		min	770	840	1680	2055	2700	1860	3920
Fan [W]		max	191	285	470	570	760	1327	2376
		med	154	230	420	490	617	750	1727
		min	115	170	350	390	500	565	1499
Sound power level [dB(A)]		max	58	61	65	66	70	77	81
		med	52	56	62	63	67	71	75
		min	44	44	57	59	63	63	71
Sound pressure level [dB(A)]	(4)	max	49	52	56	57	61	68	72
		med	43	47	53	54	58	62	66
		min	35	35	48	50	54	54	62
Available pressure [Pa]		max	75	80	70	70	70	150	150
		med	50	50	50	50	50	150	150
		min	25	15	30	35	35	150	150
Power supply [V-ph-Hz]		230 / 1 / 50 + E							
Dimensions	Height	mm	310	310	360	360	435	488	588
	Width	mm	1133	1133	1133	1445	1445	1535	1535
	Depth	mm	698	698	698	853	853	1100	1100

(1) Room temperature 27°C d.b., 19°C w.b. - Water temperature 7/12 °C.

(2) Room temperature 20°C - Water temperature 45/40 °C.

(3) Room temperature 20°C - Water temperature 65/55 °C.

(4) The sound pressure levels are 9 dB(A) lower than the sound power levels and apply to the reverberant field of a 100 m³ room and a reverberation time of 0.5 sec.

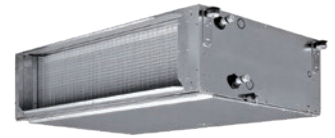
* Models not covered by EUROVENT certification program.



Manufacturer reserves the rights to change specifications without prior notice.

RFHPO-ECM Inverter high static pressure blower

4.0 kW to 18.17 kW



ECM the Energy Saving Technology

Brushless motor with inverter managed by dedicated controls. It permits to maintain extremely low electrical absorption and a continuous modulation of the air flow.

Technical features

Model RFHPO-ECM 2 pipes (4 row coil)			14	24	34	44	54
Total cooling capacity [kW]	(1)	max	5,61	7,94	10,81	13,99	18,17
		med	5,11	6,86	9,70	12,39	16,70
		min	4,14	5,44	7,87	10,47	13,73
Sensible cooling capacity [kW]	(1)	max	4,72	6,44	8,72	11,23	14,75
		med	4,18	5,36	7,61	9,65	13,26
		min	3,24	4,08	5,93	7,90	10,46
Pressure drop in cooling [kPa]	(1)	max	8,7	15,8	21,6	21,7	21,4
		med	7,2	11,8	17,4	16,9	17,9
		min	4,9	7,7	11,7	12,2	12,3
Heating capacity [kW]	(2)	max	7,76	10,62	13,06	18,08	23,25
		med	6,80	8,64	11,25	15,15	20,51
		min	5,18	6,42	8,64	12,13	15,90
Pressure drop in heating [kPa]	(2)	max	11,1	18,8	21,4	23,9	25,4
		med	8,7	12,9	16,4	17,4	20,3
		min	5,3	7,5	10,1	11,6	12,8
Air flow [m³/h]		max	1310	1780	2390	3080	3920
		med	1100	1360	1950	2440	3320
		min	780	940	1380	1840	2400
Fan [W]		max	144	225	340	530	702
		med	88	110	195	253	383
		min	40	44	80	110	166

Model RFHPO-ECM 4 pipes (with additional coil)			14+1	24+1	34+1	44+1	54+1
Total cooling capacity [kW]	(1)	max	5,46	7,87	10,70	13,90	18,00
		med	4,94	6,79	9,59	12,27	16,62
		min	4,04	5,36	7,76	10,36	13,66
Sensible cooling capacity [kW]	(1)	max	4,55	6,35	8,61	11,13	14,58
		med	4,01	5,30	7,51	9,53	13,19
		min	3,14	4,01	5,83	7,79	10,39
Pressure drop in cooling [kPa]	(1)	max	8,3	15,5	21,2	21,4	19,4
		med	6,8	11,6	17,1	16,6	16,3
		min	4,6	7,5	11,4	12,0	11,2
Heating capacity [kW]	(3)	max	4,62	6,25	8,02	10,75	13,77
		med	4,18	5,42	7,20	9,48	12,67
		min	3,43	4,33	5,90	8,06	10,53
Pressure drop in heating [kPa]	(3)	max	16,0	26,4	17,3	33,0	29,9
		med	13,4	20,4	14,3	26,3	25,7
		min	9,4	13,6	9,9	19,6	18,5
Air flow [m³/h]		max	1250	1750	2350	3040	3860
		med	1040	1340	1920	2400	3300
		min	750	920	1350	1810	2380
Fan [W]		max	144	225	340	530	695
		med	88	115	200	253	384
		min	40	44	80	110	168
Sound power level [dB(A)]		max	59	61	64	67	71
		med	52	55	60	62	67
		min	45	45	52	55	58
Sound pressure level [dB(A)]	(4)	max	50	52	55	58	62
		med	43	46	51	53	58
		min	36	36	43	46	49
Available pressure [Pa]		max	72	85	75	80	68
		med	50	50	50	50	50
		min	26	24	25	28	26
Power supply [V-ph-Hz]			230 / 1 / 50 + E				
Dimensions	Height	mm	310	310	360	360	435
	Width	mm	1133	1133	1133	1445	1445
	Depth	mm	698	698	698	853	853

(1) Room temperature 27°C d.b., 19°C w.b. - Water temperature 7/12 °C.

(2) Room temperature 20°C - Water temperature 45/40 °C.

(3) Room temperature 20°C - Water temperature 65/55 °C.

(4) The sound pressure levels are 9 dB(A) lower than the sound power levels and apply to the reverberant field of a 100 m³ room and a reverberation time of 0.5 sec.



Manufacturer reserves the rights to change specifications without prior notice.

RFHP-O and RFHPO-ECM

High static pressure blower with centrifugal fan

Compatibility tables



Compatibility table / Codes

Controls for RFHP-O models	14	24	34	44	54	64	74
Remote three speed control WM-3V (1) (4)				9066642			
Remote three speed control + electronic thermostat and manual S/W switch JWC-T (2)				9066630K			
Remote three speed control + electronic thermostat and centralized/manual S/W switch JWC-TQR (2) (3)				9066631K			
Automatic speed control with electronic thermostat and S/W switch - JWC-AU (to be used with UPM-AU and UP-AU only) (2) (3)				9066632K			
Automatic remote control with electronic thermostat, S/W switch and liquid crystal display T-MB (2) (3)				9066331E			
Receiving board for centralized control SEL-S				9079109			
Power unit UPM-AU for JWC-AU and T-MB remote controls, fitted on the unit				9066641			
Power unit UP-AU for JWC-AU and T-MB remote controls, not fitted on the unit				9066640			
Electronic controls for MB boards							
Mounted power unit MB-M (T-MB wall control included)				9066332			
Not mounted power unit MB-S (T-MB wall control included)				9066333			
Multifunction wall control up to 60 units PSM-DI				3021293			
Change-over 15-25 for control JWC-TQR				9053049			
Receiver board for control JWC-T and JWC-TQR				9066311			
Management system for a network of fan coils with MB electronic board							
Hardware/software supervisory system (to be used with MB board only) NET				9079118			
Router-S for NET (default) or for BMS systems no provided by YORK				3021290			
Relay output board SIOS				3021292			
Controls for RFHPO-ECM models	14	24	34	44	54	-	-
Automatic speed control with electronic thermostat and S/W switch - JWC-AU (to be used with UPM-AU and UP-AU only) (2) (3)				9066632K			
Automatic remote control with electronic thermostat, S/W switch and liquid crystal display T-MB (to be used with UPM-AU and UP-AU only) (2) (3)				9066331E			
Power unit UPM-AU for JWC-AU and T-MB remote controls, fitted on the unit				9066641			
Power unit UP-AU for JWC-AU and T-MB remote controls, not fitted on the unit				9066640			
Electronic controls for MB boards							
Mounted power unit MB-M (T-MB wall control included)				9066332			
Not mounted power unit MB-S (T-MB wall control included)				9066333			
Multifunction wall control up to 60 units PSM-DI				3021293			
Change-over 15-25 for control JWC-TQR				9053049			
Receiver board for control JWC-T and JWC-TQR				9066311			
Management system for a network of fan coils with MB electronic board							
Hardware/software supervisory system (to be used with MB board only) NET				9079118			
Router-S for NET (default) or for BMS systems no provided by YORK				3021290			
Relay output board SIOS				3021292			

(1) Not to be used with valves. (2) Can be used with valves and/or low temperature cut-out.
 (3) Can be used with Change Over. (4) Not suitable with -E electric heater. (5) Can be used with valve and not to be used with low temperature cut-out.

Model RFHP-O	14	24	34	44	54	64	74
Model RFHPO-ECM	14	24	34	44	54	-	-

Accessories (supplied loose)

Main and auxiliary coil valve kit (220V On/Off)							
Main and auxiliary coil 3 way valve kit 24V actuator							
External auxiliary condensate collection tray							
Electric coil							
Intake/supply spigot plenum	9034200	9034200	9034220	9034230	9034240	9034280	9034290
ePM10 50% - G4 class synthetic filter							
ePM10 70% - F6 class Synthetic Filter			-				
Antivibrating connection							